

# TAIERI BRIDGE CLUB FEBRUARY 2021 NEWSLETTER

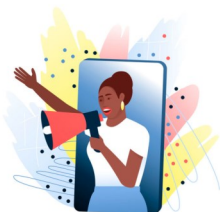


## NOTES FROM THE COMMITTEE



- ♦ Welcome to new members Bryan and Patsy Taylor, as well as Catherine Smith. Please make these members welcome.
- ♦ On the other side of the coin we are sad to see Naomi Mottershead, Jan Butcher and Phillip Morris go.
- ♦ At the time of printing there are still 21 members with unpaid subs. It would be great to get these all tidied up.
- ♦ It's that time of the year when we do a concerted effort for advertising for new members. Our lessons start on 2nd March. We will once again have an advertorial in the newspaper on Thursday 18th Feb. The best form of advertising is from our own members. Why not speak to your neighbours, friends, church members, bowling club members and anyone else you can think of? If we all tried to encourage one new member it could make a big difference to the longevity of our club.
- ♦ A Flier is attached to the email if you want to post some on your own Facebook page—it would be greatly appreciated.

**Word Of  
Mouth  
Marketing  
Is Still  
The Best!**



COURTESY

## An Interesting Hand from The Past

East Dealer; E-W Vul

**North**

♠ A954

♥ AQJ42

♦ J3

♣ T2

**West**

♠ KT83

♥ 653

♦ AT7

♣ 765

**East**

♠ Q2

♥ KT98

♦ Q864

♣ Q93

**South**

♠ J76

♥ 7

♦ K952

♣ AKJ84

Six out of eight NS pairs played it in 3NT. One pair was in 3 Clubs and one in 2 Hearts. Of the 3NT players, only one pair made the contract. The other 5 went 1 or 2 light.

The hand was played by South with a lead of 3S

If the QC and the KH finesses work the contract is easily made. If not, it is much more difficult.

Duck the opening lead of 3S and let the QS win. Duck the likely return of a Spade for West to win with the Ten. The A9 of Spades is now sitting over the K8 in the West hand when the J is eventually lead.

Ducking the spade lead twice, establishes an extra spade trick and the contract is made with 5 Clubs, 2 Spades, 1 Heart and 1 Diamond

## TOURNAMENTS COMING UP

21 Feb—Otago Bridge Club—Save the Children Charity Pairs.

6 Mar—Invercargill Open 8B Pairs, entries close 5/3.

7 Mar – Oamaru 5A Open Pairs, entries close 4/3

13 Mar—Taieri Bridge 8B Open Pairs—keep this day free to support our club.

## THE GAME OF BRIDGE



## Etiquette

Be polite when winning or losing – this applies to your partner as well as opponents.

Please make opponents feel welcome on arrival and on departure.

Consider that not everyone is open to constructive criticism – and even less to comments on “bad play”.

If you can't say something nice then don't say anything at all.

Please remember: our club objects are a spirit of encouragement, friendliness, co-operation and enjoyment for all.



if you can't  
say nothing  
nice, don't  
say anything  
at all

## Opening Lead out of Turn

When a defender makes an opening lead out of turn, the declarer has so many choices to make that it can often be very confusing. Here is an explanation of some of the choices and some tips for making the most advantageous decision in each case.

1. **Declarer can accept the lead and become Dummy.** His/her hand goes down on the table and partner plays. OR
2. **Declarer can accept the lead and remain Declarer.** Dummy goes down on the table and Declarer can look at it before playing a card from his/her hand.

Tip: The decision about whether to accept the opening lead is based on 2 things: (1) Can I win that trick or at least regain control in the second round? And (2) Do I want the weak or the strong hand on the table? Usually you want the strong hand OFF the table so any weaknesses in it remain hidden from the opposition.

If the opening lead is in your weak suit (i.e. you have only losers in it), you would choose not to accept it. In this case, the lead must come from the correct hand and you have 3 further choices.

3. **You can require the lead to be in the same suit as the incorrect lead.** In this case, the incorrect lead is picked up and does not have to be played as long as Defender follows suit.

Tip: This would be a strategic decision if you have a broken suit in your hand that you want the opposition to lead into. Not recommended unless you know what you are doing.

4. **You can forbid a lead in the same suit as the incorrect lead.** (Once again, the incorrect lead is picked up.) Defender cannot lead from the forbidden suit as long as s/he retains the lead.

Tip: This is your best bet if you've got losers in this suit that you hope you will be able to throw away (pitch) on one of your strong suits.

## OUT OF HAND

BY BILL BUTLER



" Our bridge teacher says you're to make the opening lead face down! "

*Barbara Wilkes*

NEWSLETTER EDITOR